

# FIRE HERO® 2

Art. No. 507004



## CE 0197 EN 15090:2012 HI3 CI AN M SRC - Typ F2A

Leather thickness (Foot-Area) 2.5 – 2.7 mm, leather thickness (Shaft-Area) 2.0 – 2.2 mm, chainsaw protection level 2, waterproof and breathable with CROSSTECH®, leg height 27 cm, antistatic, sole FIRE 01

Available sizes UK 4½ – 12, Extra large sizes UK 13/14/15



HAIX® FL Fit System



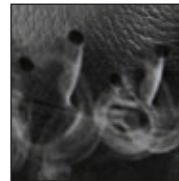
HAIX® 3Z Protector System



HAIX® HD Cap System



HAIX® ES Out System



HAIX® Climate System



HAIX® Vario Wide Fit System



507004

### Upper Material

Waterproof leather, hydrophobic, breathable (5,0 mg/cm<sup>2</sup>/h), Leather thickness (Foot-Area) 2,5 – 2,7 mm, Leather thickness (Shaft-Area) 2,0 – 2,2 mm

### Cut Protection

Protection against cuts certified with level 2 (24 m/sec., chainsaw speed)

### Inner lining

CROSSTECH® Laminat Technology; 4-layer CROSSTECH® laminate, watertight and breathable. Abrasion-resistant lining with optimized climate comfort for all seasons, espec. for flexible alternating inside and outside use. Superior penetration resistance against blood and body fluids (protection against blood borne bacteria and virus). Increased chemical protection.

### Non-woven insole

Non-woven insole absorbs moisture.

### Foot bed

Comfortable, cushioning, moisture repellent, anti-bacterial. Separate heel shape for good cushioning and foot insertion.

### HAIX® Composite toe cap

Anatomically formed and ultralight protective toe cap made of fiber-reinforced plastic for highest safety requirements.

### Protective Throughsole

Flexible protective throughsole.

### Sole

Extremely slip resistant profiled rubber sole. Optimal performance in water, ice, and snow. Fulfills the highest demands of the European Standards EN 15090:2012 + SRC.

### HAIX® HD Cap System

Specially developed profiled rubber toe cap for long lasting durability.

### HAIX® Climate System

The HAIX Climate system uses the pumping movement, which permits air circulation with every step – warm air is released and fresh air comes in through the vent holes at the top of the boot.

### HAIX® Fast Lacing Fit System

Patented Two Zone Lacing System for quick and optimal lacing adjustment and correct fit of the boot.

### HAIX® Vario Wide Fit System

The width of the shoe can be individually adjusted by 3 different insoles. The shoe is supplied with a red insole (medium). A yellow insole (wide) and blue insole (narrow) can be ordered separately.

### HAIX® 3Z Protector System

Safety Protection zones to prevent injury to the shin, ankle and metatarsal.

### HAIX® MSL System

MicroSoftLight: Improved damping, extremely low weight due to the PU foam across the entire sole area, good cold/heat insulation.

### Sun Reflect

Reduces the heating effect of the upper leather by direct sunlight. Sunlight is reflected by the leather, keeping the leather and the feet cooler.

UK	3	3½	4	4½	5	5½	6	6½	7	7½	8	8½	9	9½	10	10½	11	11½	12	12½	13	13½	14	14½	15
EU	35	36	37	37	38	39	39	40	41	41	42	43	43	44	45	45	46	47	47	48	48	49	50	50	51
US	4	4½	5	5½	6	6½	7	7½	8	8½	9	9½	10	10½	11	11½	12	12½	13	13½	14	14½	15	15½	16

### HAIX®-Schuhe, Produktions- und Vertriebs GmbH

Auhofstrasse 10, 84048 Mainburg, Germany  
T. +49(0)8751/8625-0, F. +49(0)8751/8625-25  
info@haix.de, www.haix.com